

30歳台 男性

- 主訴: 3~4年前からの左肘の曲げにくさ
 - 既往歴やスポーツ歴、外傷歴なし
- A man in his 30s had limited flexion of left elbow for 3 - 4 years.
 - no medical history, no sports, no trauma

Radiograph



MRI
coronal

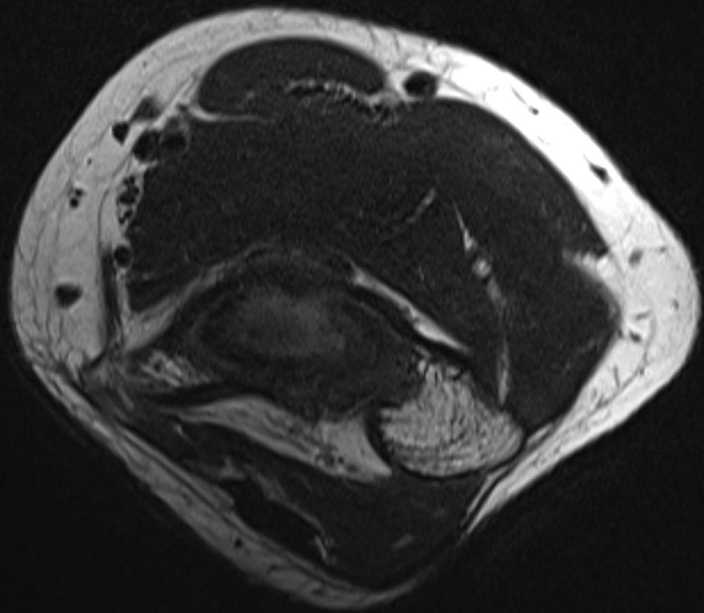


T2WI

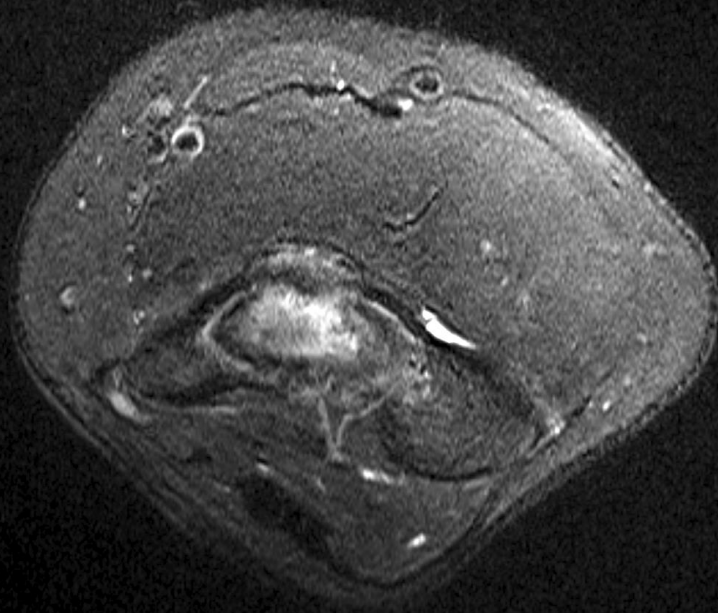


CE

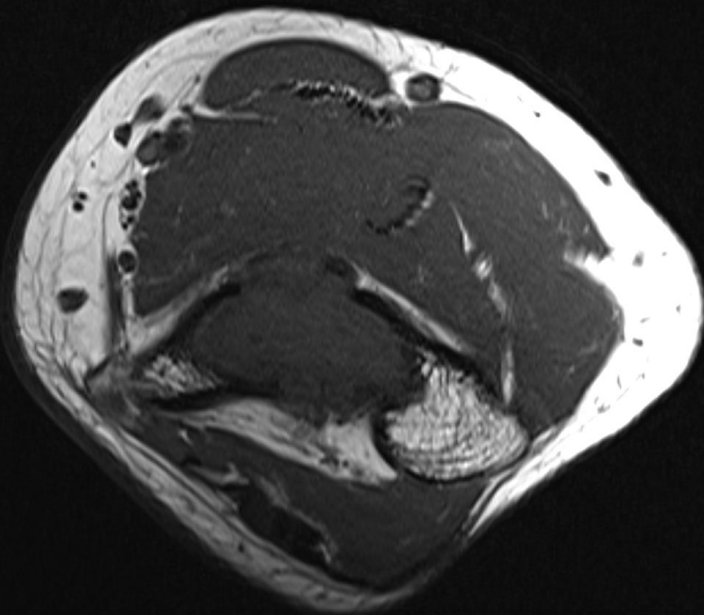
T2WI



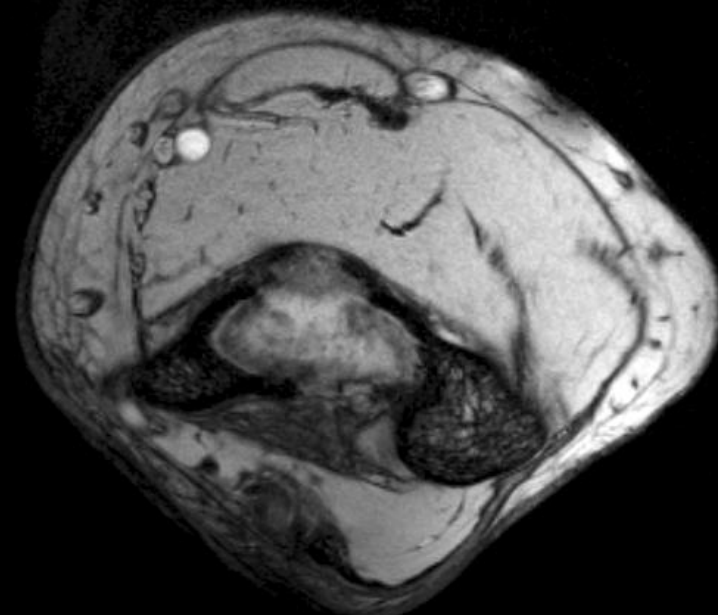
fsT2WI

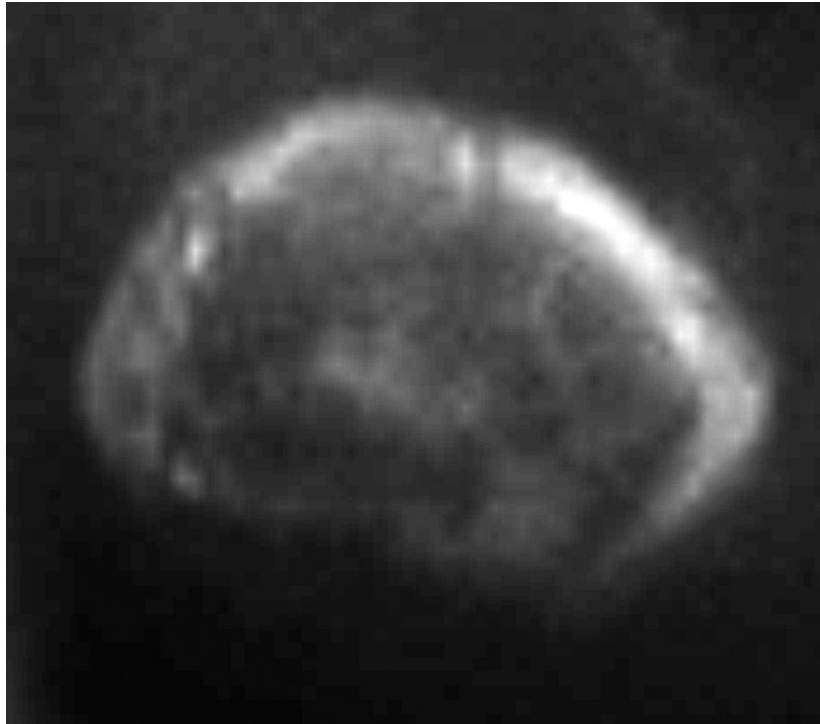


T1WI



T2 * WI

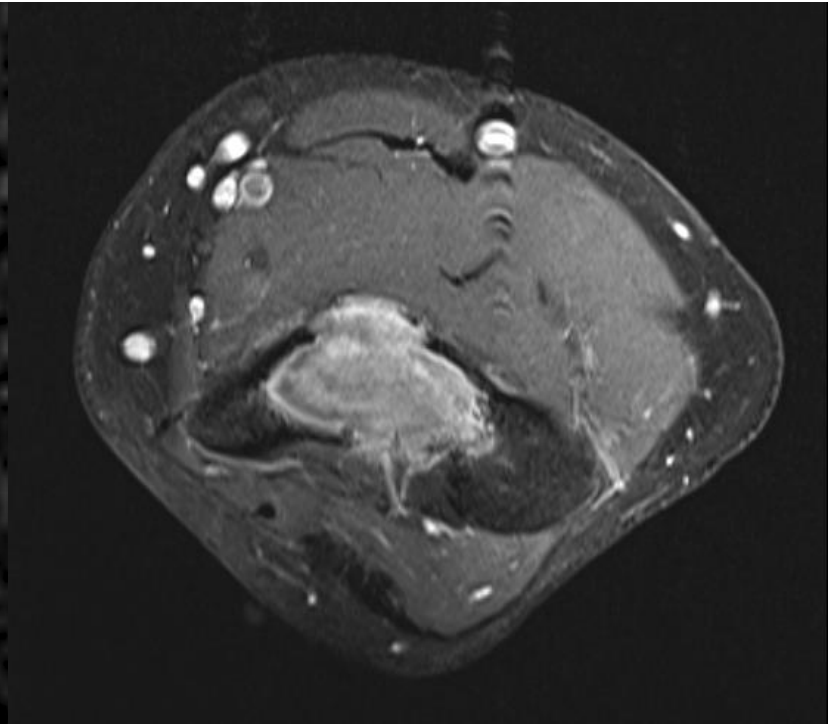




DWI



ADC



CE

MRI dynamic study

