

# 症例1

【症例】30代男性

【現病歴】

1年ほど前から背部痛

4ヶ月前から右下肢の脱力としびれ

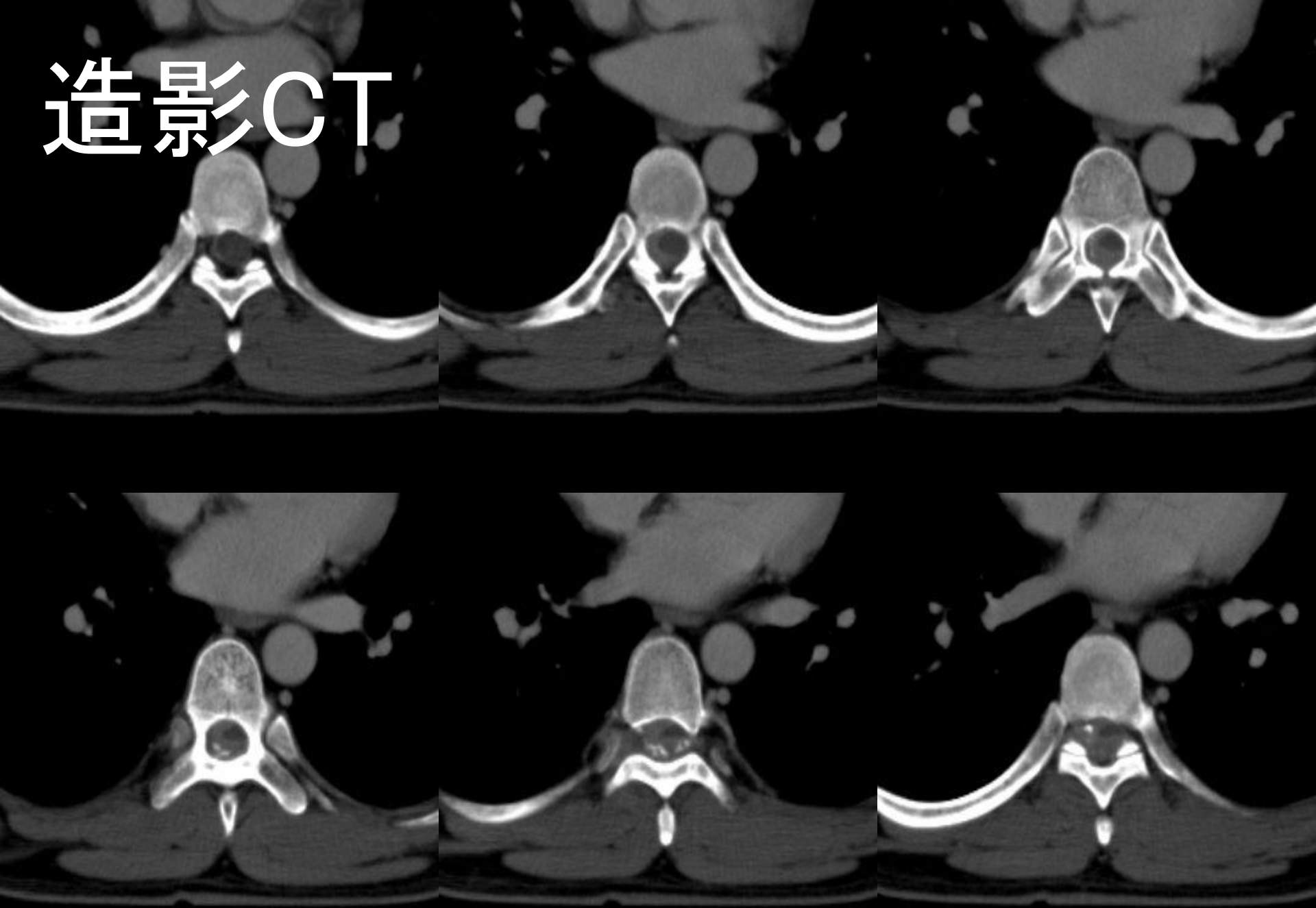
その後左下肢にも脱力

近医でMRを撮像され腫瘍性病変を指摘

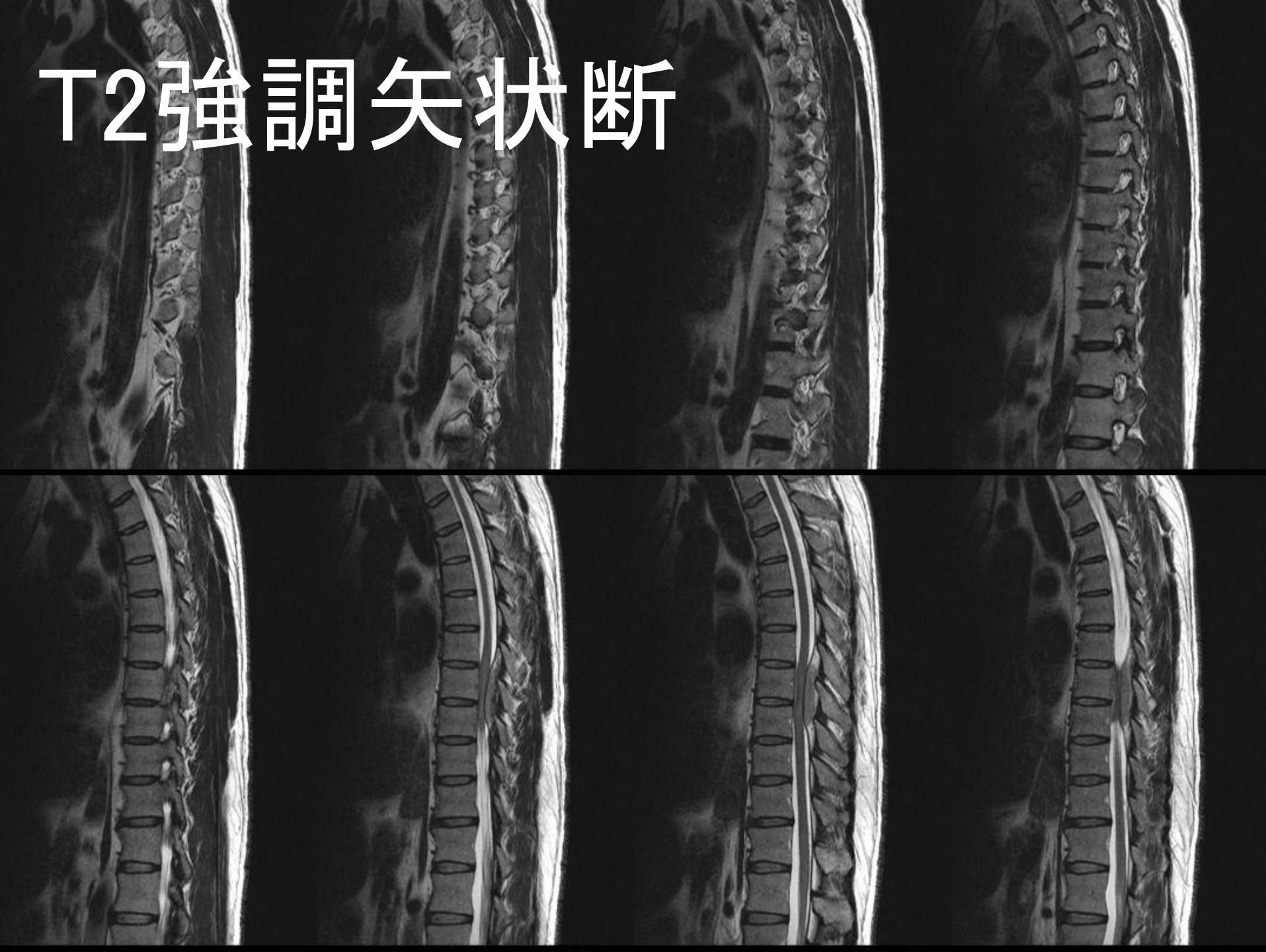
その後当院紹介

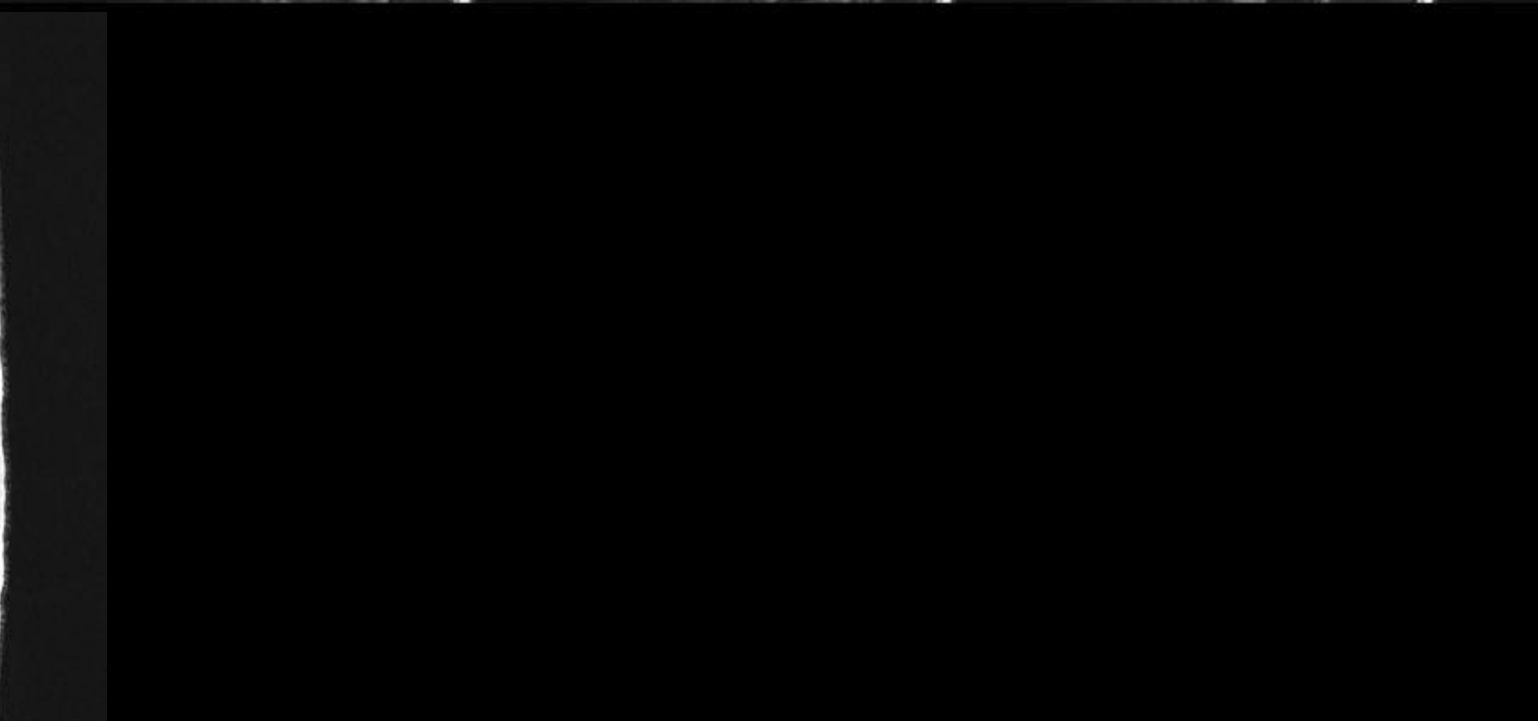
【既往歴】特記事項なし

# 造影CT

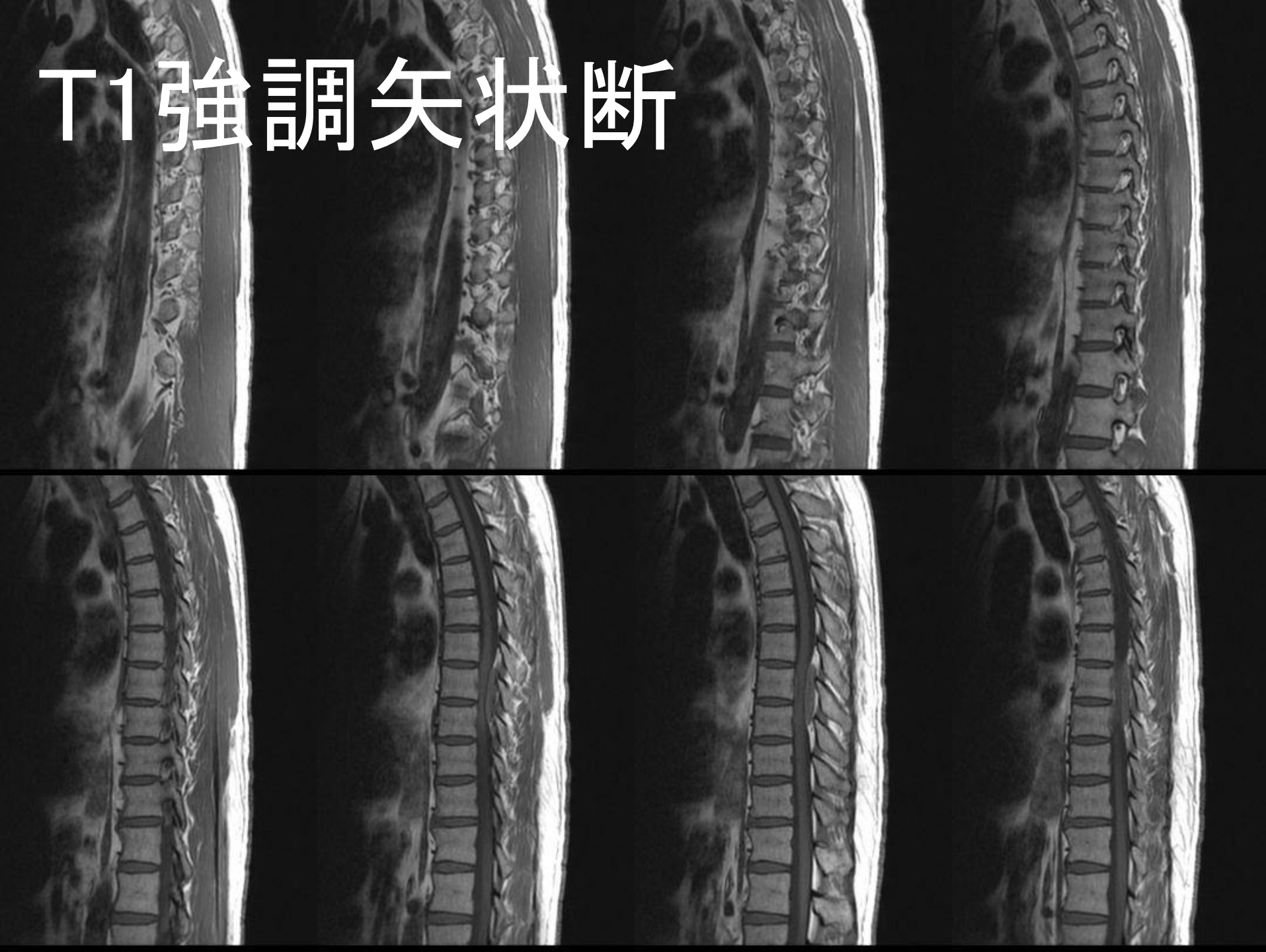


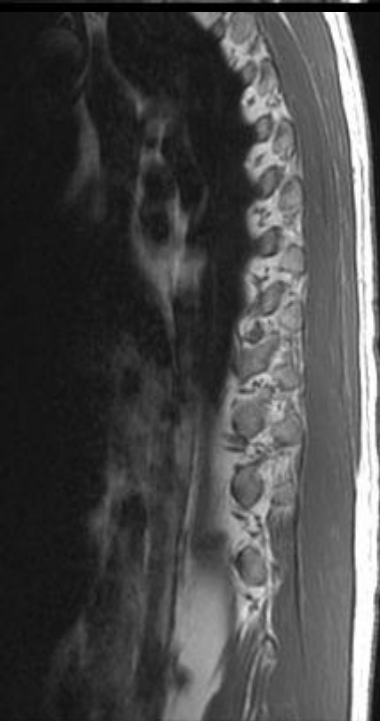
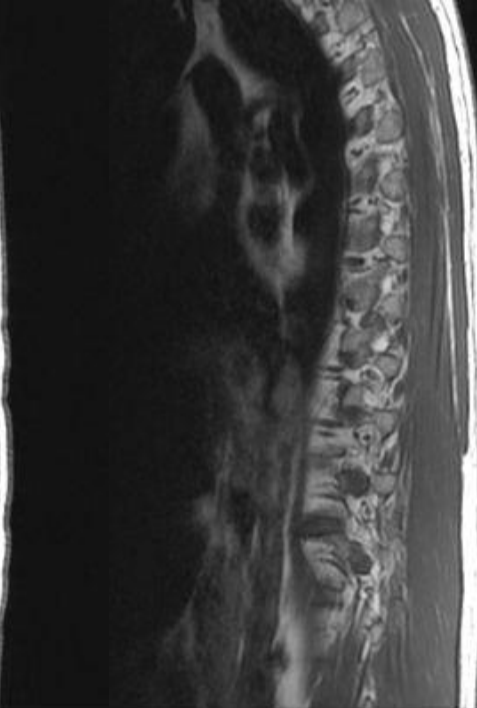
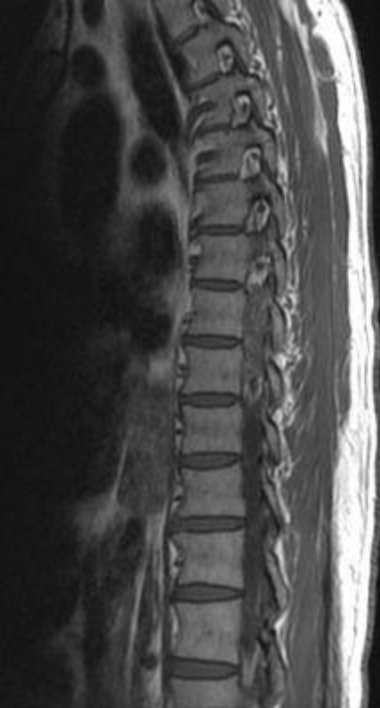
# T2強調矢状断



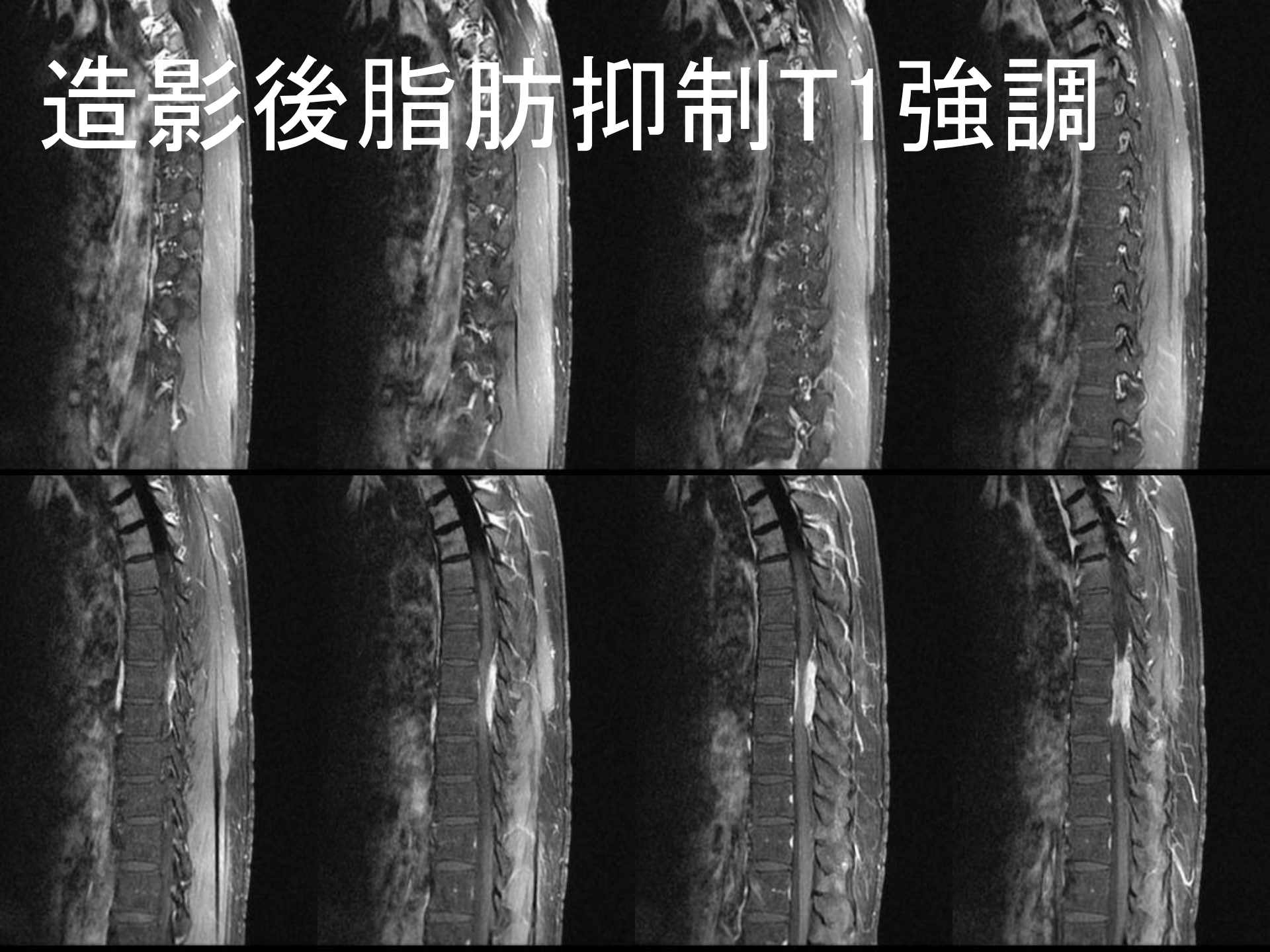


# T1強調矢状断

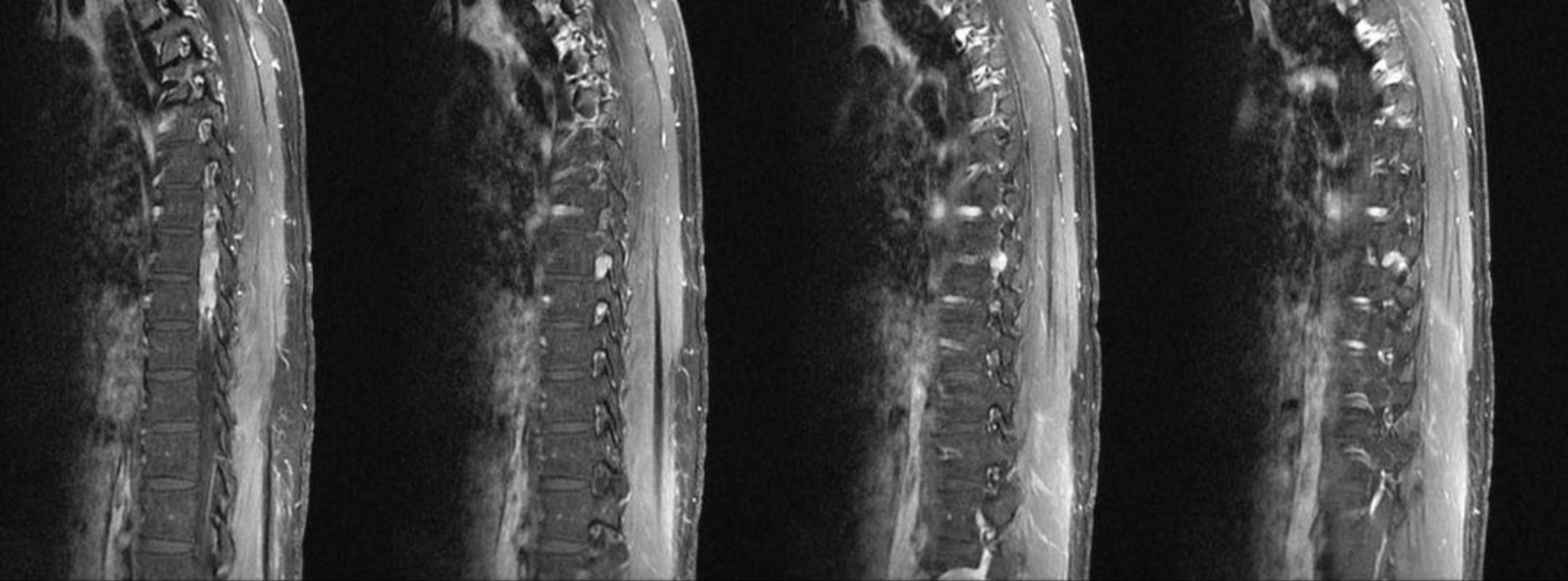




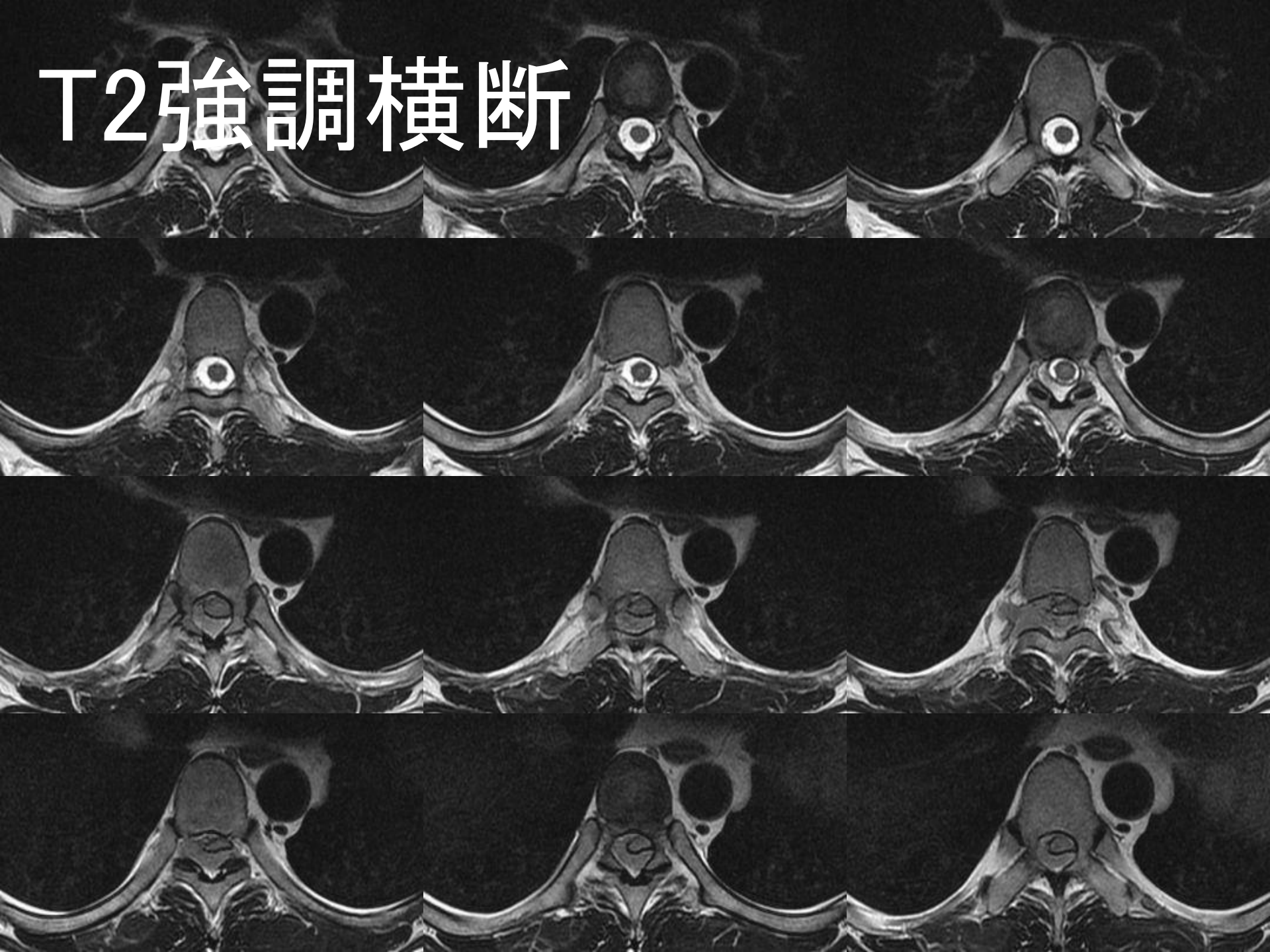
# 造影後脂肪抑制T1強調

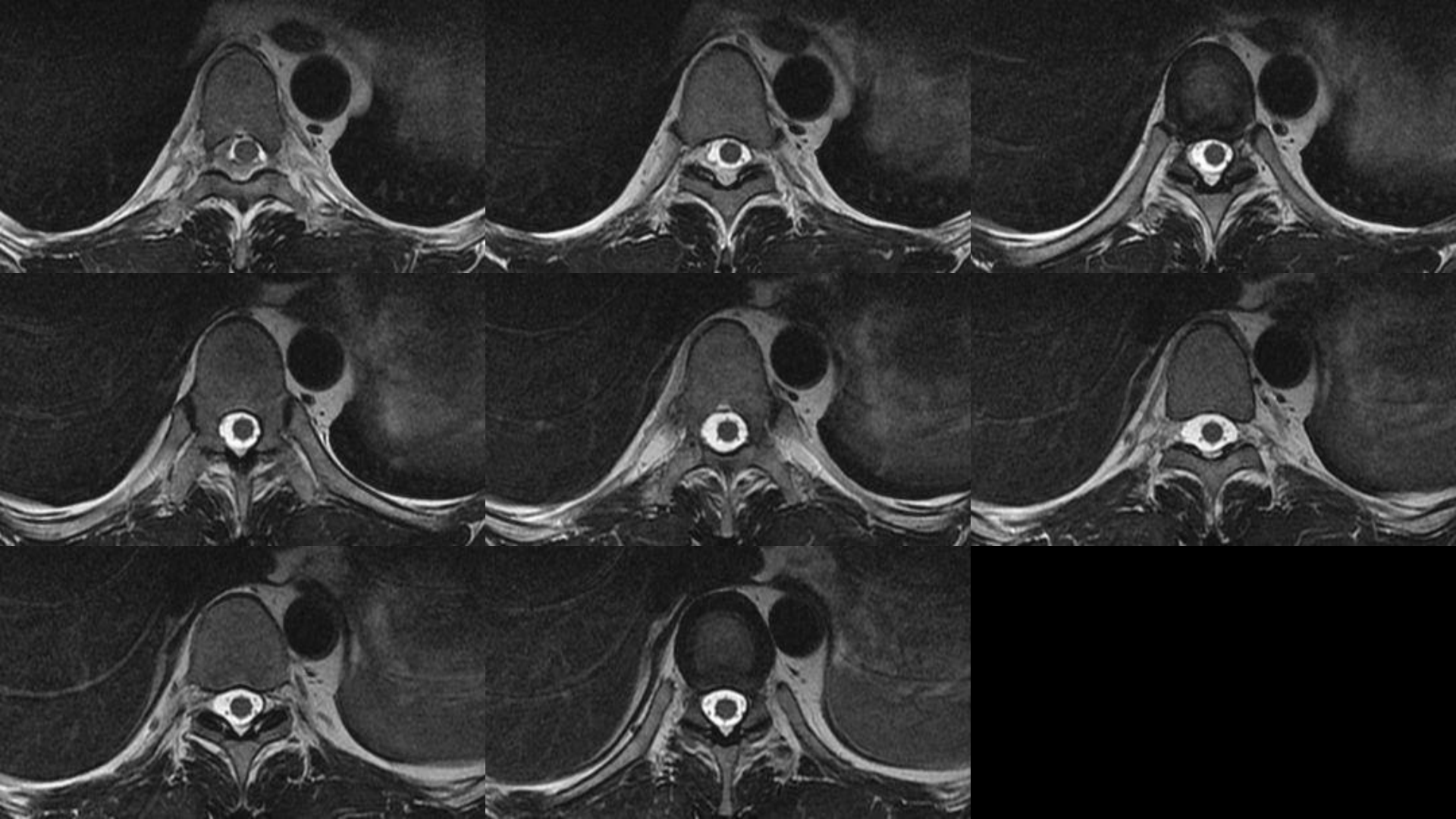






# T2強調横断





# 造影後脂肪抑制T1強調

